

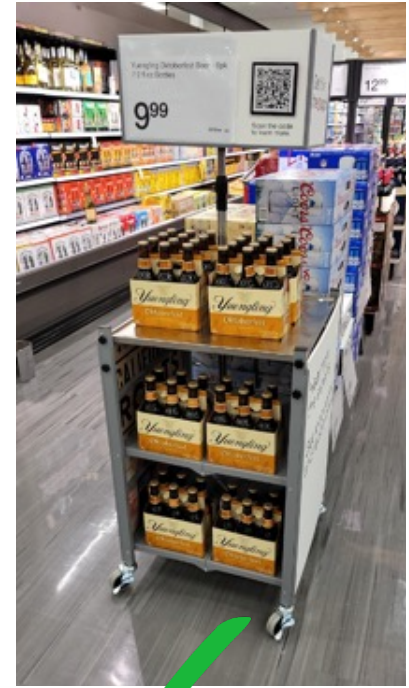
HOW TO TAKE THE "PERFECT" PICTURE



The "perfect" photo includes a clean & complete uniform, name tag, we id sign, sampling supplies, fully stocked featured product & D2D cart price sign, and QR code

DOs

- Take at least one photo at $\frac{3}{4}$ profile so that we can see the side of the cart.
- Ensure the cart is fully in the frame and not too far away or close.
- An image of you smiling with your display is **always preferred**. Those are the pictures that are often featured in our recaps!



DON'Ts

- No thumbs, Guests, Target team members, store carts, etc.
- Ensure the cart is in the frame and not too far away or close.
- No blurry photos or have anything other than the cart in the frame.

